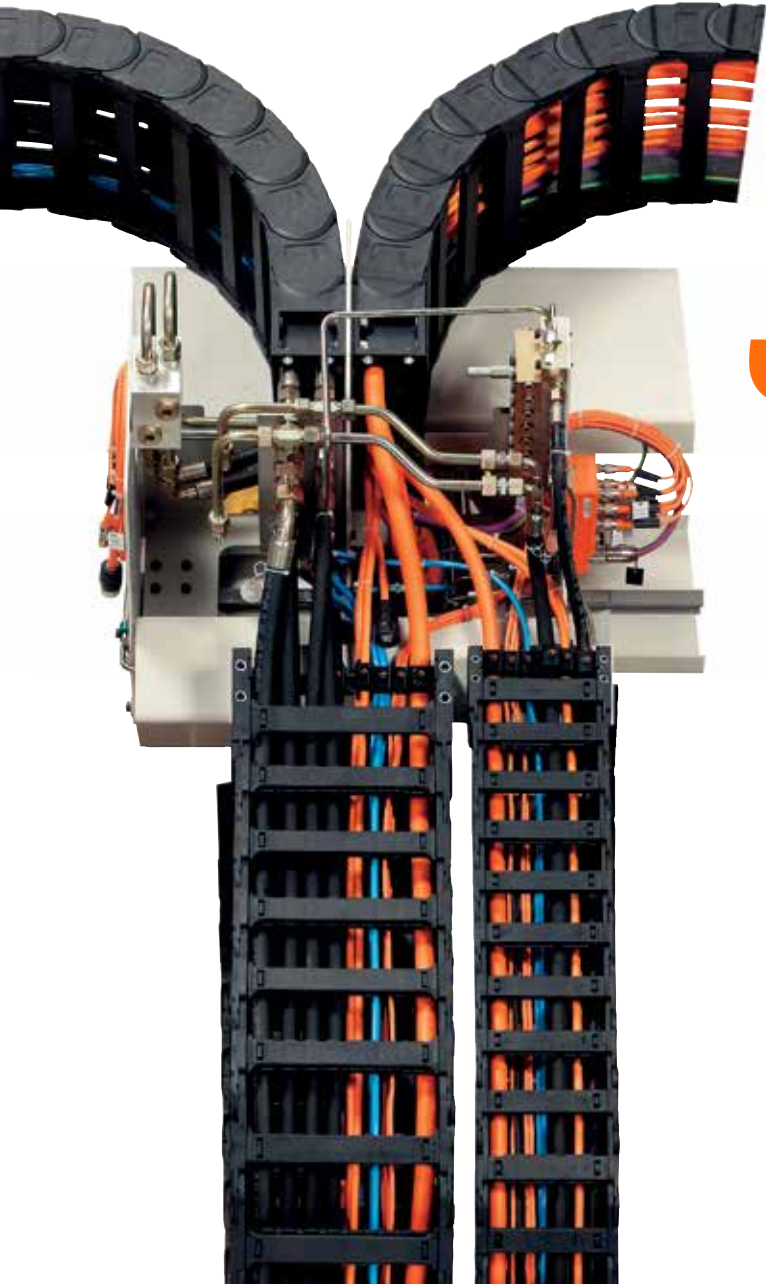


Ready-to-install E-Chain Systems®  
Plastics for longer life®  
[www.readychain.com](http://www.readychain.com)  
[igus.com](http://igus.com)

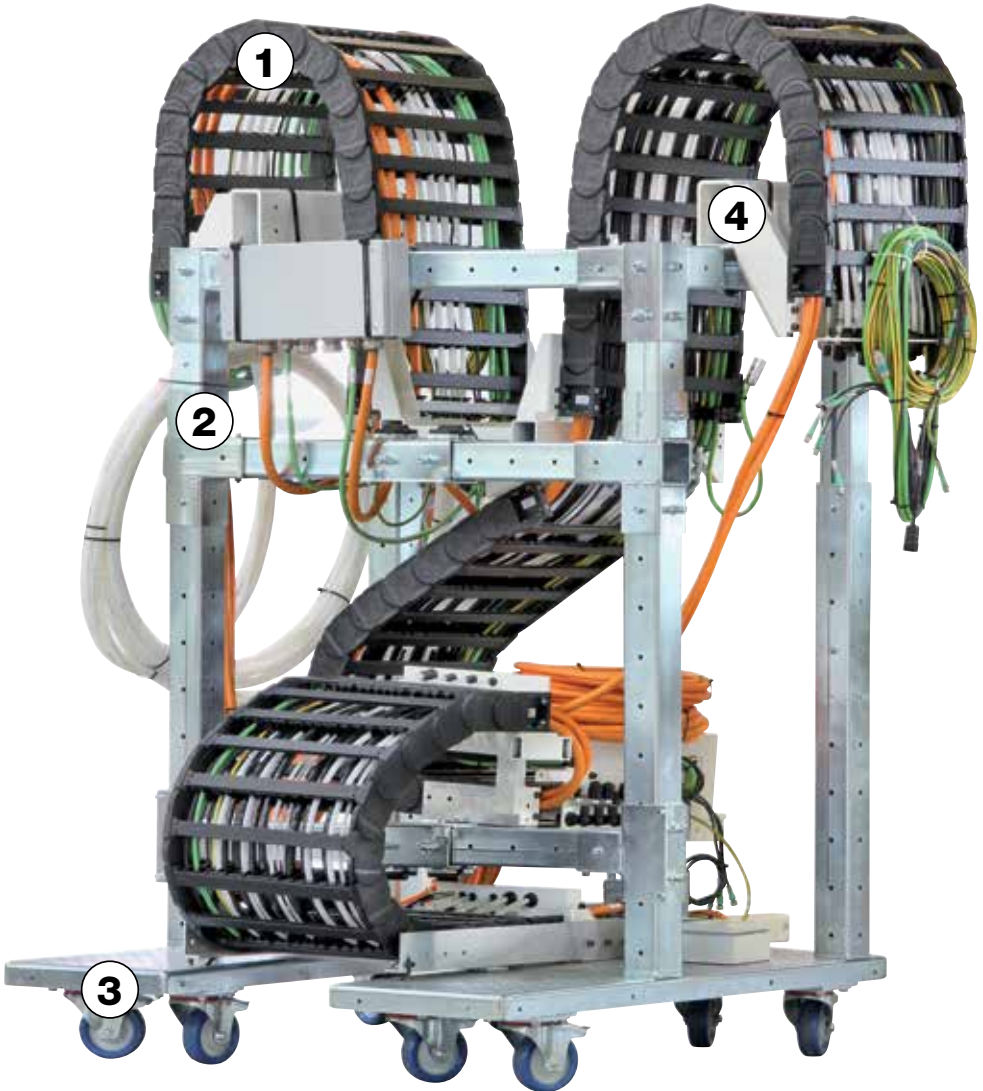


# ReadyChain®

ECS-B4

# Ready made ...

Modular ... quick ... and ready to install.



Save 80% during prototyping.  
Assembly transport rack for ready-to-install energy supply systems.

# Minimize processing costs ...

## Everything from one source



### 1 Everything from one source

The ReadyChain® system includes pre-assembled, customized Energy Chain Systems®. The "Plug and Play" solutions are configured, manufactured and delivered according to individual customer specifications. The use of the mounting rack can yield benefits even at low volumes.

### 2 Flexible components

The telescoping supports and braces of the ReadyChain® rack allow flexible adaptation to the installation situation on site.

Changes in mass production can be undertaken easily. Using the latching mechanism, additional components can subsequently also be easily attached to the rack.

### 3 Sustainable use

ReadyChain® rack components are galvanized and designed for a long life.

Each rack is constructed within a few hours. The individual elements can be reused at any time removing the need to dispose of custom made parts, as with conventional welded transport racks.

### 4 Precise fitting "Plug & Play"

All interfaces and attachments are designed for a quick and easy installation of the Energy Chain.

The complete package includes the matching plugs and connectors, plates, sensor actuator boxes, linear bearings, links to the central lubrication, etc., all reducing the installation time considerably.

Your guide to reduced processing costs – Achieve your target in hours instead of days with the new modular transport rack from igus®.

# igus® ReadyChain® factory ...

Over 150 dedicated assembly employees worldwide



A view of customized Energy Chain Systems being assembled at igus® headquarters,





Cologne, Germany

# Connectors, cables, accessories

## igus® connectors



Round plug connector kit



D-sub in the service kit



... and everything else you may need ...

Readily available ...

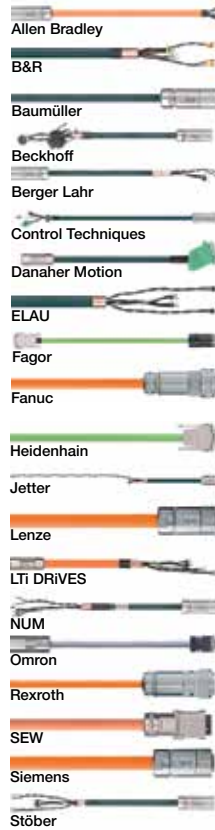


Connectors from stock

## ReadyCable

20 manufacturers standards

### Drive systems



Over 2,800 assembled drive cables...

20 manufacturers standards, 6 jacket materials  
Allen Bradley, Fanuc and Siemens, assembled  
and shipped in 24 hours. No minimum order -  
no cut charges

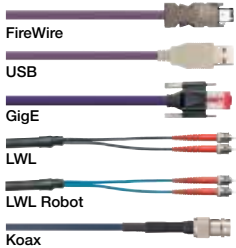


Stripper Crimper

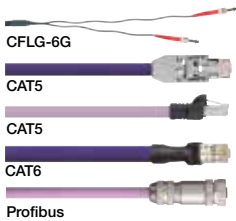
## - 6 jacket qualities

### Catalog standards

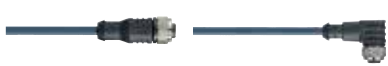
#### Video / Vision / Bus tech



#### Network / Ethernet / FOC / Field bus



#### CF-INI initiator cables up to 4 x d



#### Special cable assemblies



Online connector-cable configurator:

➤ [www.igus.com/quickpin](http://www.igus.com/quickpin)



100% tested

## Hoses and attachments

### Hoses



### Attachments



... to meet your needs ...

## Design services



Mechanical interface design ...

Individual trough design ...



Individual trough design

# Configured ... mounted ...

## ReadyChain® timeline

1



System acceptance



### ReadyChain® service:

- We visit you
- Define interface
- Logistics planning
- Cycle integration
- Time schedule

2



Project phase



### ReadyChain® service:

- Component selection
- Interface optimizations
- Documentation
- Integrated project management
- Cost optimization

3



Initial acceptance of prototype



### ReadyChain®

#### virtual conferencing:

- Initial acceptance from your work place
- Build your prototype with an igus® project engineer, live in your meeting
- Contact us to schedule a virtual conference
- Your requests for changes explained with a model, or visit us for acceptance in production.



System review on your machine



Project planning



Prototype including transport rack

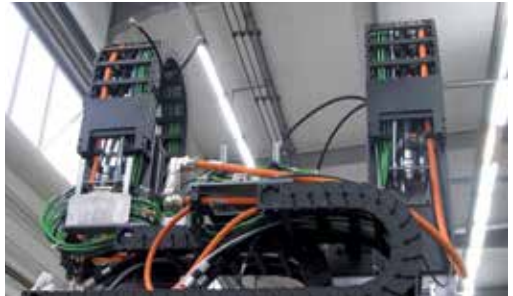


# with system guarantee

4



igus®  
installation



## Installation

- System installation by igus® specialists
- igus® will supervise the installation process
- Transparent, fixed price



Installation on site

# Cable assembly ...

Capacity for 600,000 assembled cables a year ...



Process reliability ... Crimp force monitored ... automated ... time-optimized ...

more than 18,000 test programs ... 1,800 test adapters ...



Customized cable assembly



Modern machinery



100% tested



# Research and development ...

29,600 sq ft. lab ... 8,000 tests per year ... 1,000 datasets on service life



**Strength test** to determine maximum unsupported length



**Noise Determination** of operating noise of an E-Chain®



**Cable dissection** for service life calculation



of chains and cables created each year



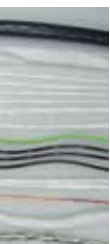
Chip drum test for chip tightness of E-Tubes



Customer-specific test set-up



Long travel endurance test for service life calculation



Cold test of cables and Energy Chain® at -40°F



For your safety ...

# Your assembled e-chain<sup>®</sup>

Assembled E-Chains<sup>®</sup>, connectors and cables from igus<sup>®</sup> ...



Ready to install systems, from connectors through assembled cables up to complex energy supply modules, delivered in 1-10 days.



## Everything from one source – directly from the manufacturer



Customer-related production

### ReadyChains® – Quickly raise capacities and cash flow with igus®

- Lower overhead costs
- Cut your throughput times from days to hours
- Respond flexibly to order variations
- Utilize igus® manufacturing capacities and our know-how in the cable assembly.
- Reduce the number of suppliers and orders by 75% (one order, one invoice, one delivery)
- A partner for minimal machine downtimes
- All ReadyChain® components are subject to extensive quality control and function testing.



From one-off to mass production

# You determine ...

You determine the degree of harnessing ...

the quantity ...

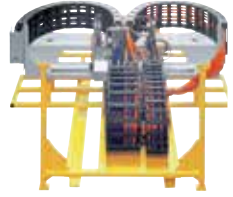


Up-to-date production processes, custom-build or serial production.  
Fast and cost-effective delivery.

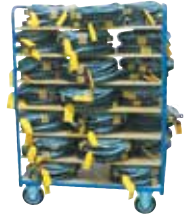


# igus® delivers...

the travel length ...



From simple ..... to complex



From single units..... to serial production



From short ..... to long travel length

We harness from simple Energy Chain Systems® with Chainflex® continuous-flex cables to complex systems. These systems may include all cables and hoses (pneumatic, hydraulic), patch plugs, inner partitions, connecting elements and connecting parts as requested.



ReadyChain®  
“Basic”



ReadyChain®  
“Standard”

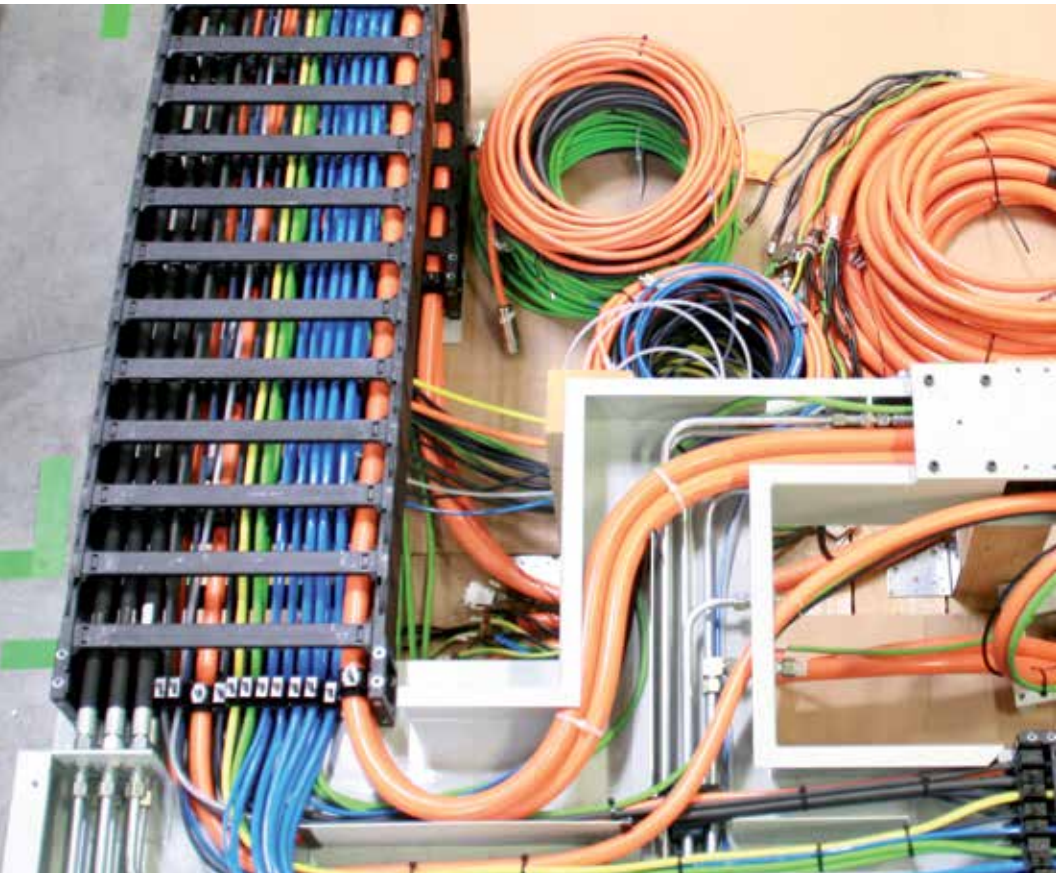


ReadyChain®  
“Premium”

**Standardized ReadyChain®  
packages facilitate your entry**

# igus®: own products ...

The quality of the system is as good as its parts



Chainflex®  
➤ [www.chainflex.com](http://www.chainflex.com)

Chainflex®-special cables for E-Chains®  
More than 1,000 types from stock...6 jacket materials...smallest radii from 4 x d... -31°F up to +212 °F



E-Chains®  
➤ [www.igus.com/e-chain](http://www.igus.com/e-chain)

igus® E-Chains®  
For every application and use. Developed and produced by igus®. Over 100,000 items from stock

# perfectly combined ...



## Everything from one source – igus® products and service

Your individual system solution completely from one source up to final installation on site. With warranty and predictable fixed price.

### igus® Engineering

Tailor-made solutions as individual as your application: Delivery within 24hrs: Standardized concepts for rotary applications, long travels with rooving, heavy-duty guide troughs and vertical applications.





# Quick assembly at your site ...

Save time and money on maintenance and installation





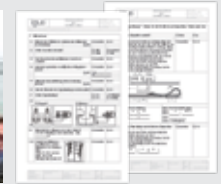
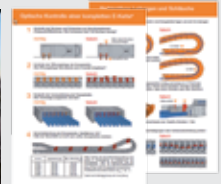
# igus® assembly service



## Get an accurate assembly and avoid machine downtimes and extra costs...with the igus® E-Chain System® assembly service

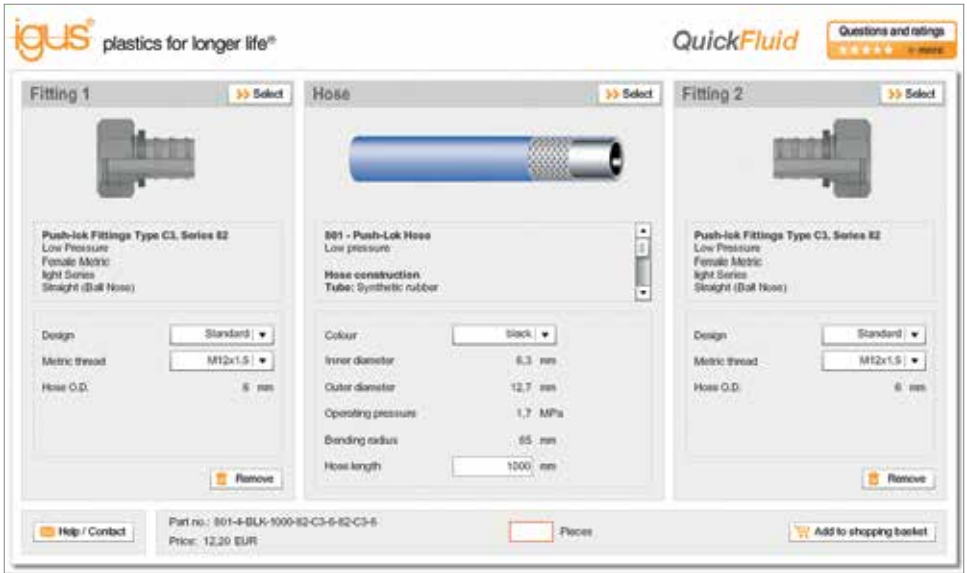
Machines must work reliably and without problems. This requires reliable energy supply systems and cables that guarantee a long service life and a quick service, by which machine downtimes can be avoided or reduced in case of emergency.

- Predictable fixed cost for the installation, maintenance or inspection of energy supply systems on your system
  - Fast and accurate installation and maintenance of all components by qualified specialist personnel
  - No downtimes, minimal stoppage times
  - Products and services from one source – less logistical hassle for you
  - igus® system guarantee
- [igus.com/assemblyservice](https://igus.com/assemblyservice)



# Configure online ...

Hoses and electric cables according to your needs ...



## Configured in minutes:

### QuickFluid hose cable configurator

Choose from 28 types of hydraulic and industrial hoses, tubes and hoses as well as a total of 200 fittings and configure your individual hose in few minutes. With direct display of prices and ordering possibility.

- 28 hose types, 12 fittings series in many versions
- Select the right hose via series, pressure range, operating pressure, inner / outer diameter or bending radius
- Direct price display
- Easy options for query and order

➤ [igus.com/quickfluid](https://igus.com/quickfluid)



# reduce processing costs

igus® plastics for longer life® QuickPin 2.0

Cable browser Plug configurator Pin configurator

Plug Connection Cable Connection Plug

Chainflex® CF6 control cable PVC CFS.05.09

### Plug selection

QuickPin 2.0 Help video

First of all, please select the required **plug type** for the left cable end in the **selection window** by clicking on the respective image. Depending on the selected cable, only certain plug types are possible.

Then please select further parameters to specify your plug/connector. Entries in orange are not applicable in combination and must be revised.

We'll be glad to personally assist you further.

Hilger Dörks  
Tel: +49(0)2203-9649-382

Markus Höffel  
Tel: +49(0)2203-9649-9817

Dirk Hodgson  
Tel: +49(0)2203-9649-564

### D-Sub

Plug Selection

Manufacturer: **FCT**

Direct select

Article found:

Insulator: **F3TP10G3**

Housing: **FMG10**

Size: 4

No. of poles: 37

Housing:  Straight  45° angled

Contact type:  Female  Male

Locking system:  Screw  Screw metric  Knurled head screw  Knurled head screw metric  Slide latch

Mounting type:  Crimp  Solder

Housing material:  Metal  Plastic  Metalized plastic

Contact block mounting:  1 on cable end  1 opposite cable end

## QuickPin 2.0 – connector-cable configurator

In only 3 minutes select from over 1,000 Chainflex® cables and 3,500 connector components, configure cable online, directly order.

- Fast selection using parameters or manufacturer's part number
- Intuitive operation with mouse and drag & drop
- Transfer configured cable into the shopping cart and inquire, order or mark it for ordering later
- Prices immediately shown online, including copper surcharge
- Custom connector/cable solution from one source

➤ [igus.com/quickpin](https://igus.com/quickpin)

igus® plastics for longer life® QuickPin 2.0

Plug Connection Cable Connection Plug

Chainflex® CF6 control cable PVC CFS.05.09

### Contact assignment

Contact	Pole	Cable	Plug
1	1	1	1
2	2	2	2
3	3	3	3
4	4	4	4
5	5	5	5
6	6	6	6
7	7	7	7
8	8	8	8
9	9	9	9
10	10	10	10
11	11	11	11
12	12	12	12
13	13	13	13
14	14	14	14
15	15	15	15
16	16	16	16
17	17	17	17
18	18	18	18
19	19	19	19
20	20	20	20
21	21	21	21
22	22	22	22
23	23	23	23
24	24	24	24
25	25	25	25
26	26	26	26
27	27	27	27
28	28	28	28
29	29	29	29
30	30	30	30
31	31	31	31
32	32	32	32
33	33	33	33
34	34	34	34
35	35	35	35
36	36	36	36
37	37	37	37

Change assignments

Remove all assignments



# In our warehouse ...

100,000 E-Chain® components ... over 1,000 Chainflex® cable types ...

## E-Chains® ...



100,000 E-Chain® components

## Chainflex® cables ...



Over 9 million feet of cables



Thousands of feet of guide trough ...



18,840 ft² test lab – more than 8,000 tests



Numerous strain relief solutions



More than 8,000 sections per week

# ... and not your order for the material

# the material waits for your order ...

3,500 connector components ...

## assembling



3,500 connector components

## Plastics for longer life®

### Increase the service life of your machines with plastics

Lower costs and raise service life by eliminating lubrication and lowering maintenance costs, everything delivered from stock immediately - that is the core idea and objective behind all igus® products, systems and services.

igus® plastics with their tested and proven properties in durability, friction and stability are the main focus of the igus® products.

We offer you 100,000 products from stock and from "Size One".



Quickly within reach



Just in time supply



als!

# Assembled systems and service ...

... 11 ReadyChain® factories worldwide ...



## ReadyChain® factories

- ① igus® Cologne
- ② igus® Brazil
- ③ igus® China
- ④ igus® India
- ⑤ igus® Italy
- ⑥ igus® Japan
- ⑦ igus® South Korea
- ⑧ igus® Spain
- ⑨ igus® UK
- ⑩ igus® USA
- ⑪ igus® South Africa

“Our goal is to maximize your peace of mind, so we also carry out insulation resistance testing, point-to-point continuity testing, and performance testing according to your requirements.”

Dale Rheaume  
ReadyChain® Operations Manager USA + Canada



ReadyChain® factory, Italy

“Our aim for our customers is to achieve a more sophisticated technology combined with a reduction of costs. Our factory in Shanghai grows at a fast pace and enables us to satisfy all our domestic customers requirements.”

Benson Shi  
ReadyCable® Operations Manager, China





# in 24 hours ... worldwide!



- ReadyChain® factories
- igus® offices
- Certified partner



ReadyChain® factory, United Kingdom

"A fast rising number of Indian customers is pushing us to introduce our ReadyChain® concept. Especially in the crane market the reduction of assembly time is an important improvement."

Sreejith Menon  
ReadyChain® Operations Manager, India



"Here at igus® Spain we have market specialists for main industries like machine tool, packaging and automotive where we offer cost effective solutions for either small or large volumes with the same benefits."

Diego Jiménez  
ReadyCable® + ReadyChain® product manager, Spain



ReadyChain® factory, China



# 9001:2008

igus® is certified in accordance with ISO 9001:2008 and ISO/TS 16949:2009 in the field of energy supply systems, cables and harnessing, as well as plastic bearings.



igus® Inc.  
PO Box 14349  
East Providence, RI 02914  
Tel: 800-521-2747  
Fax: 401-438-7270  
E-mail: [sales@igus.com](mailto:sales@igus.com)  
[www.igus.com](http://www.igus.com)

# ReadyChain®